



2013

Dry Fashion Sportswear GmbH

Profi sailing “Regatta”



- Active breathable dry suit
- 3 layer system
- External layer robust nylon
- Middle layer: micro porous membrane
- Lining: soft polyester tricot
- Front zip
- Knee and seat reinforced in 600D polyester
- Braces
- Inside pocket
- Lengthened back section
- **Surcharge for adjustable neck seal**

- **Setting in zip (fly)**
- **Surcharge for latex socks**
- **Surcharge for breathable 3 layer socks**

- **Surcharge for neoprene neck and wrist seals**
- **Sizes: 128, 146, 158, 164, XS, S, M, L, XL, XXL**

Article code	Colour code	Description
105	74	Colour top: white / breast stripe: red / bottom navy Kneereinforcement: navy / Seatreinforcement: red
105	79	Colour: black with red insert Knee and seat reinforcement: black

Profi sailing “Regatta” print fabric



- Active breathable dry suit
- 3 layer system
- External layer robust nylon
- Middle layer: micro porous membrane
- Lining: soft polyester tricot
- Front zip
- Knee and seat reinforced in 600D polyester
- Braces
- Inside pocket
- Lengthened back section
- **Surcharge for adjustable neck seal**

- **Setting in zip (fly)**
- **Surcharge for latex socks**
- **Surcharge for breathable 3 layer socks**

- **Surcharge for neoprene neck and wrist seals**
- Sizes: 128, 146, 158, 164, XS, S, M, L, XL, XXL

Article code	Colour code	Description
105	77	Colour top: print fabric (blue/black) / bottom half: black Kneereinforcement: black / Seatreinforcement: black Front zipper

Sailing standard nylon



- 200 denier Oxford nylon with special soft coating
- Knee and seat reinforcement in 600D polyester
- Braces
- Inside pocket
- Front zip
- Lengthened back section
- **Surcharge for adjustable neck cuff**
- **Setting in zip (fly)**
- **Surcharge for latex socks**
- Sizes: 128, 146, 158, 164, XS, S, M, L, XL, XXL

Article code	Colour code	Description
140	21	Colour top : red / bottom half: navy Knee und seat reinforcement: navy
140	79	Colour: black with red insert Knee and seat reinforcement: black

Sailing standard



- PVC coated base fabric
- Reinforced knee and seat
- Lengthened back section with choice of front or back zip
- Braces
- Inside pocket
- **Surcharge for adjustable neck cuff**
- **Setting in zip (fly)**
- **Surcharge for latex socks**
- Sizes: 128, 146, 158, 164, XS, S, M, L, XL, XXL

Article code	Colour code	Description
131	40	Colour Top: White / bottom half: red Knee and seat reinforcement: red
131	41	Colour Top: white / bottom half: navy Knee reinforcement: red / Seatreinforcement: navy

Anti pilling fleece dungarees (360 g)



- Two-way middle zip
- Zipped breast pocket
- Elastic ankle cuffs
- Knee and seat reinforcement
- Sizes: XS, S, M, L, XL, XXL

Article code	Colour code	Description
650 00	Colour: navy	

Anti pilling fleece underall (360 g)



- Two-way middle zip
- Zipped breast pocket
- Knee and seat reinforcement
- Elasticated ankle cuffs
- Sizes: 146, 158, 164, XS, S, M, L, XL, XXL, XXXL

Article code	Colour code	Description	
660	00	Colour: navy	- Size: 146 - XXL
660	00	Colour: navy	- Size: XXXL

Anti pilling fleece underall (260 g)



- Two-way middle zip
- Elasticated fabric
- Sizes: 146, 158, 164, XS, S, M, L, XL, XXL, XXXL

Article code	Colour code	Description	
665	00	Colour: black with grey stripes	- Size: 146 - XXL
665	00	Colour: black with grey stripes	- Size: XXXL

Active breathable 3 layer dry top



- Active breathable spray top
- 3 layer system
- External layer robust nylon
- Middle layer: micro porous membrane
- Lining: soft polyester tricot
- Completely sealed seams
- Front pocket with Velcro closure
- Latex neck and arm seals
- Extra wide adjustable neoprene waistband
- Sizes: 146, 158, 164, XS, S, M, L, XL, XXL

Article code	Colour	code Description
169 79	Colour:	black/red

Active breathable 3 layer spray top



- Active breathable spray top
- 3 layer system
- External layer robust nylon
- Middle layer: micro porous membrane
- Lining: soft polyester tricot
- Completely sealed seams
- Soft adjustable PU neck and arm seals
- Front pocket Velcro closure
- Extra wide adjustable neoprene waistband
- Sizes: 146, 158, 164, XS, S, M, L, XL, XXL

Article code	Colour code	Description
174	01	Colour: black / red with a white breast stripe

Spray top



- 200 denier Oxford nylon with special soft coating
- Completely sealed seams
- Soft adjustable PU neck and arm seals
- Front pocket with zip
- Extra wide adjustable neoprene waistband
- Sizes: 146, 158, 164, XS, S, M, L, XL, XXL

Article code	Colour code	Description
170 74	Colour: black / red	

Profi sailing neoprene steamer



- Double coated neoprene summer season wetsuit, 3mm
- Lengthened back section
- Breast and back areas are made of smooth neoprene for better thermal insulating
- Supratex knee and seat reinforcement
- 5mm neoprene knee and arm insets
- Adjustable arms short or long
- Back zip
- Sizes: XS, S, M, L, XL, XXL

Article code Colour code Description
 155 45 Colour: black / orange inserts

Profi sailing neoprene shorty



- 3 mm neoprene wetsuit
- Breast and back areas are made of smooth neoprene for better thermal insulating
- Short arms and legs with adjustable Velcro closures
- Front zip and seat reinforcement from Supratex
- Bottom half and arms are durably covered
- Sizes: XXS, XS, S, M, L, XL, XXL
- Children Size: 146, 158, 164

Article code	Colour code	Description
158	45	Colour: black / orange inserts
159	45	Colour: black / orange inserts / for children

Neoprene shoe



- This all purpose neoprene shoe offers a variety of uses from sailing, surfing to beach shoe. Ankle and toe parts are reinforced with rubber as well as an anti-slip rubber sole. A Velcro closure ensures a perfect fit.
- Sizes: 34/35, 36, 37/38, 39, 40/41, 42, 43/44, 45/46, 47, 48

Article code	Colour code	Description
215 00	Colour: black / royal blue	

Basic neoprene trapeze boots



- Neoprene boot with special rubber reinforcement at heel and instep
- Long side zip
- Short Velcro fastener at shaft
- Anti-slip sole
- Sizes 34/35, 36, 37/38, 39, 40/41, 42, 43/44, 45/46, 47, 48

Article code	Colour code	Description
212 10	Colour: navy/black, small	white stripes

Profi neoprene trapeze boots



- Neoprene boot with special rubber reinforcement at heel and instep
- Long side zip
- Velcro fastener around the shaft
- Strong anti-slip sole
- Sizes 34/35, 36, 37/38, 39, 40/41, 42, 43/44, 45/46, 47, 48

Article code	Colour code	Description
210 00	Colour: black / small orange	stripes

Repair set socks



Article code	Colour code	Description
363	00	Socks (pair) with glue sizes: XS (36-38), S (39-41), M (42-44), L (45-47)

Latex socks



Article code	Colour code	Description
300	00	Waterproof sealing latex socks (pair) Sizes: XS (36-38), S (39-41), M (42-44), L (45-47)

Elasthane socks



- Thin elastic elasthane socks
- Easier cold and socks protection
- Seam free sole panel
- Easy entry into neopren boots
- Sizes: 34/35, 36, 37/38, 39, 40/41, 42, 43/44, 45/46, 47,48

Article code	Colour code	Description
161	00	Colour: black

Repair set adjustable neck



Article code	Colour code	Description
330	00	Adjustable neck seal with glue Sizes: 1 (146-XS), 2 (S-XXXL)

Repair set neck



Article code	Colour code	Description
340	00	Neck seal with glue Sizes 0 (128, very slim arms), 1 (146-XS), 2 (S-XXXL)

Repair set wrist



Article code	Colour code	Description
350	00	Wrist seals with glue (pair) Sizes: 0 (128, very slim arms), 1 (146-XS), 2 (S-XXXL)

Repair set ankle



Article code	Colour code	Description
360	00	Ankle seals (pair) with glue (standard size)

Metalite neoprene socks



- 2mm neoprene metalite coated socks
- Offers perfect cold protection (heat reflective)
- Seam free sole panel
- Flatlockstitch technology
- Sizes: 34/35, 36, 37/38, 39, 40/41, 42, 43/44, 45/46, 47

Neoprene gloves



- 2 mm neoprene gloves back of hand reinforcement in amara
- Adjustable Velcro wrist strap
- Correct fit for cold seasons
- Keeps your hands warm
- Perfect supplement for dry suits.
- Sizes: XXS, XS, S, M, L, XL, XXL

Article code	Colour code	Description
222 00	Colour: black / charcoal	

Neoprene dry glove



- 3mm seamless neoprene glove
- Elasticated „4-Way Stretch“ neoprene
- Dry seal wrist
- Smooth neoprene cuff is waterproof, in conjunction with the cuff of a dry suit
- Coated with a special anti-slip coating
- Keeps your hands warm
- Sizes: XXS, XS, S, M, L, XL, XXL

Article code	Colour code	Description
221 00	Colour: black / charcoal	

Trapeze boots



- Rubber shaft with cotton liner
- Side lacing
- Hand-made with low shaft
- Anti-slip sole
- Sizes: 36, 37, 38, 39, 40, 41, 42, 43, 44, 45, 46,47

Article code	Colour code	Description
200 00	Colour: blue / white	

Boat boots „Skipper“



- Comfortable sailing and leisure boots from rubber
- **Total height: Size 42 approx. 30 cm**
- Removable insole, very comfortable fit.
- Reinforced heel and instep
- Cotton liner
- Anti-slip sole
- Shaft with padded lacing

Article code	Colour code	Description
229	00	Colour: navy blue Sizes: 36, 37, 38, 39, 40, 41, 42, 43, 44, 45, 46, 47

Boat boots „Sailer“ with high shaft



- Sailing and leisure boots from rubber
- **Total height: Size 42 approx. 38 cm**
- Removable insole, comfortable fit.
- Reinforced heel and instep
- Cotton liner
- Anti-slip sole
- Shaft with padded lacing

Article code	Colour code	Description
230	00	Colour: navy blue with white stripes Sizes: 36, 37, 38, 39, 40, 41, 42, 43, 44, 45, 46, 47, 48

Leather sailing gloves



- Soft, sea water-proofed leather, fingers and palm reinforced and padded
- Elastic back of hand section
- Velcro, with and without fingertips
- Sizes: XXS, XS, S, M, L, XL, XXL

Article code	Colour code	Description	Price
225	00	Colour: navy / white with fingertips Thumbs and index fingers are free	
226	00	Colour: navy / white without fingertips	

Amara sailing gloves „Air Nash“



- Hard-wearing, soft amara
- Palm-to-fingertip reinforced with nash padding
- Elastic back of hand section
- Velcro closure
- With and without fingertips
- Sizes: XXS, XS, S, M, L, XL, XXL

Article code	Colour code	Description	Price
227	00	Colour: navy / grey with fingertips Thumbs and index fingers are free	
228	00	Colour: navy / grey without fingertips	

Kevlar sailing gloves



- Soft, robust amara
- Fingers and palm reinforced
- Hard-wearing kevlar
- Elastic back of the hand
- Wrist Velcro closure
- With and without fingertips
- Sizes: XXS, XS, S, M, L, XL, XXL

Article code	Colour	code Description
238	00	Colour: yellow / black / grey with fingertips Thumbs and index fingers are free
239	00	Colour: yellow / black / grey without fingertips

**„Ostsee“
Breathable crew jacket**



- Comfortable, breathable and waterproof crew jacket from coated Oxford nylon with fully taped seams
- Covered front zip with double Velcro tab and press-stud
- Adjustable arm closure with aeration
- High-cut collar with removable hood
- Two amply cut front pockets with covered zip and inside pocket with zip
- Adjustable waist and hood
- Taffeta Lining, colour: marine.
- Sizes: XS, S, M, L, XL, XXL

Article code	Colour code	Description
402 14	Colour: navy/white/red	

**„Nordsee“
Breathable trousers**



- Breathable and waterproof trousers from hard-wearing Oxford nylon with fully taped seams and lengthened back section
- Thigh pocket and ankle tightening with Velcro taps
- Adjustable waistband
- Lining: Taffeta lining and PE Mesh
- **These trousers match the colours of crew jacket „Ostsee“**
- Sizes: XS, S, M, L, XL, XXL

Article code	Colour code	Description
405	10	Colour: navy

**„Sylt“
Water- and windrepellent women softshell coat**



- Womencoat with soft waisted cut
- Breathable and waterproof material
- Coat made of high quality stretch softshell
- At the collar is a hidden zipper for attachment of the multi-adjustable and the head shape and size adjustable storm hood
- two front bags with concealed zipper
- Infinitely adjustable cuffs
- Fixed, elastic drawstring waist
- Fleece lining for better insulation
- Sizes: XS, S, M, L, XL, XXL



Article code	Colour code	Description
810 48	Colour: dark blue	
810 52	Colour: light blue	
810 72	Colour: grey	
810 74	Colour: red	
810 79	Colour: black	

**„Rügen“
Water- and windrepellent women softshell jacket**



- Sporty and comfortable jacket
- Breathable and waterproof material
- Jacket made of high quality stretch softshell
- The two - way front zipper has been deposited
- The collar is a hidden zipper for attachment of the multi-adjustable and the head shape and size adjustable storm hood
- Two large front pockets with concealed zipper cut
- Infinitely adjustable cuffs
- Fixed, elastic drawstring waist
- Fleece lining for better insulation
- Sizes: XS, S, M, L, XL, XXL



Article code	Colour code	Description
801 48	Colour: dark blue	
801 52	Colour: light blue	
801 72	Colour: grey	
801 74	Colour: red	

**„Poel“
Water- and windrepellent allover print softshell jacket**

- breathable and waterrepellent jacket
- Jacket made of high quality stretch softshell
- The two - way front zipper has been deposited
- The collar is a hidden zipper for attachment of the multi-adjustable and the head shape and size adjustable storm hood
- Two front bags one breast- and hood bag
- Stufenlos verstellbare Armbündchen
- Infinitely adjustable cuffs
- Fixed, elastic drawstring waist
- Fleece lining for better insulation
- Sizes: XS, S, M, L, XL, XXXL



Article code	Colour code	Description
855 48	Colour: dark blue with black insert	

**„Usedom“
Water- and windrepellent softshell jacket**



- Thermoregulating softshell jacket
- breathable and waterrepellent jacket
- Jacket made of high quality stretch softshell
- The two - way front zipper has been deposited
- The collar is a hidden zipper for attachment of the multi-adjustable and the head shape and size adjustable storm hood
- Two front bags one breast- and hood bag
- Infinitely adjustable cuffs
- Fixed, elastic drawstring waist
- Fleece lining for better insulation
- Sizes: XS, S, M, L, XL, XXXL



Article code	Colour code	Description
851 48	Colour: dark blue	
851 54	Colour: dark grey	
851 72	Colour: light grey	
851 79	Colour: black	

**„Pellworm“
Water and windrepellent softshell vest**



- Thermoregulating vest
- Breathable and waterproof material
- Vest made of high quality stretch softshell
- The two way front zipper is deposited
- Two front bags with zipper
- Fixed, elastic drawstring waist
- Fleece lining for better insulation
- Sizes: XS, S, M, L, XL, XXXL



Article code	Colour code	Description
830 48	Colour: dark blue	
830 54	Colour: dark grey	
830 72	Colour: light grey	
830 79	Colour: black	

**„Baltrum“
Water- and windrepellent softshell jacket**



- Comfortable sporty soft shell jacket
- The fabric is very elastic, water and wind repellent
- Straight cut
- Deposited zip with chin guard
- Two side pockets and one pocket on the breast with zip
- Adjustable waistband and embroidered logo
- Sizes: XS, S, M, L, XL, XXL, XXXL

Article code	Colour code	Description
850	79	Colour: black

**„Spiekeroog“
Water- and wind repellent woman’s softshell jacket with hood**



- Sporty woman’s soft shell jacket
- The fabric is very elastic, water and wind repellent
- Waisted cut
- Deposited zip with chin guard
- Two side pockets with zip
- Adjustable waistband and embroidered logo
- Sizes: XS, S, M, L, XL, XXL, XXXL



Article code	Colour code	Description
800	79	Colour: black
800	85	Colour: beige

**„Ummanz“
Woman´s fleece jacket (260g)**



- Heat insulation and moisture absorbing
- Sporty light fitted cut
- Very comfortable to wear
- The Fleece is water repellent
- Zipper in coloured contrast
- Medium length zipper
- Two bags outside with zipper
- Stand up collar with inserted chin guard
- Adjustable waistband
- Size: XS, S, M, L, XL, XXL, XXXL



Article code	Colour code	Description
701 48	Colour: dark blue	
701	74	Colour: red
701	79	Colour: black

“Husum”

Anti pilling woman’s fleece jacket (360 g) with windstop



- Sporty cut for women
 - 2-way zipper with chin guard.
 - Deposited zip fleece.
 - Two side pockets and one inside pocket with zip
 - Adjustable waistband and embroidered logo
 - Windstopper with Taffeta lining
- Sizes: XS, S, M, L, XL, XXL



Article code	Colour code	Description
703	74	Colour: red
703	78	Colour:
703	79	Colour:

“Rantum”

Anti pilling woman’s fleece jacket (360 g) without windstop



- Sporty cut for women
- 2-way zipper with chin guard.
- Deposited zip fleece.
- Two side pockets and one inside pocket with zip
- Adjustable waistband and embroidered logo
- Sizes: XS, S, M, L, XL, XXL, XXXL



Article code	Colour code	Description
702	74	Colour: red

**„Hiddensee“
Knit fleece jacket with membrane**



- Particularly high heat insulation properties
- Beautiful look with knitted fleece
- Sporty straight cut
- Comfortable to wear
- Windproof and water repellent
- Collar, shoulder and elbow in coloured contrast
- Medium length zipper
- Two bags outside with zipper
- Stand up collar with inserted chin guard
- Adjustable waistband
- Size: XS, S, M, L, XL, XXL, XXXL



Article code	Colour code	Description
512 48	Colour: dark blue / grey	
512 54	Colour: black / grey	
512 65	Colour: silvergrey / grey	

**“Borkum”
Anti pilling fleece jacket (360 g) with windstop**



- Lavish fleece jacket
 - Sporty straight cut
 - Wearing comfort
 - Continuous central zip
 - Two side pockets
 - Adjustable waistband and embroidered logo
 - Windstopper with taffeta Lining
- Sizes: XS, S, M, L, XL, XXL, XXXL
4XL, 5XL, 6XL



Article code	Colour code	Description
502 63	Colour: red, inner collar navy	
502 71	Colour: navy, inner collar red	

**“Norderney”
Anti pilling fleece vest windstopper (360 g)**



- Sporty fleece body warmer
- Straight cut
- Comfortable to wear
- Continuous central zip
- Two side pockets and one inside pocket with zip
- Adjustable waistband and embroidered logo
- Windstopper with Taffeta lining
- Sizes: XS, S, M, L, XL, XXL, XXXL

Article code	Colour code	Description
503	74	Colour: red
503	78	Colour: navy
503 79	Colour: schwarz	

**„Fehmarn“
Anti pilling bonded fleece jacket (370 g) with windstop fabric**



- Comfortable sporty bonded fleece jacket
- Straight cut
- Continuous central zip
- Two side pockets and one pocket on the left sleeve with zip
- Adjustable waistband and embroidered logo
- Sizes: XS, S, M, L, XL, XXL, XXXL



**“Wangerooge”
Anti pilling fleece jacket (360 g) with windstop**

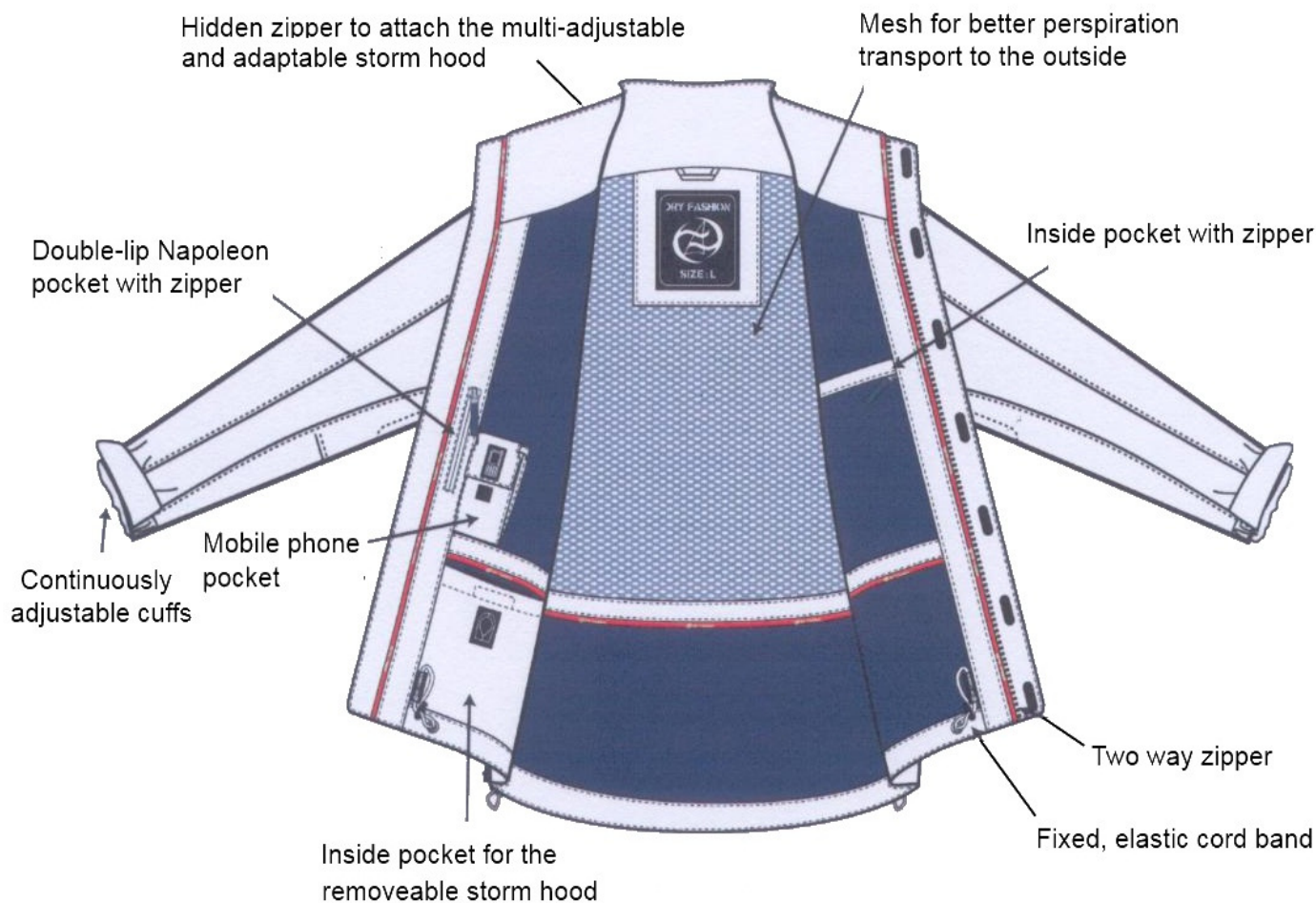


- Comfortable sporty fleece jacket
 - Straight cut
 - 2-way zipper with chin guard
 - Deposited zip fleece
 - Two side pockets and one inside pocket with zip
 - Adjustable waistband and embroidered logo
 - Windstopper with taffeta lining
- Sizes: XS, S, M, L, XL, XXL, XXXL



Article code	Colour code	Description
510 78	Colour:	navy
510	79	Colour: black

Fittings of jacket “Helgoland”, “Amrum” and “Juist” from inside



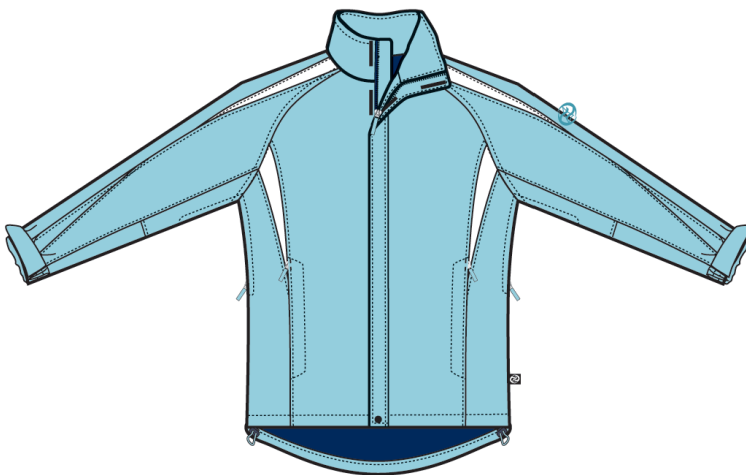
Equipment of the hood



Woman's Jacket „HELGOLAND“



- Sportive cut, breathable, waterproof women's jacket made of high quality light structure fabric.
- The seams are fully welded.
- The two-way front zipper is covered with a Velcro flap.
- At the collar is a hidden zipper to attach the multi-adjustable and adaptable storm hood.
- Two spacious front pockets with hidden zipper. A Napoleon and inside pocket with zipper. Inside a mobile phone and hood pocket with Velcro closure.
- Continuously adjustable cuffs.
- Fixed, elastic cord band in the waist.
- Mesh for better perspiration transport to the outside.
- Size: XS, S, M, L, XL, XXL



Article code	Colour code	Description
670 50	Colour: navy / white	
670 51	Colour: light blue / white	
670 74	Colour: red / white	

Jacket „JUIST“



- Breathable and waterproof allround jacket made of light structure fabric.
- The seams are fully welded.
- The two-way front zipper is covered with a Velcro flap.
- At the collar is a hidden zipper to attach the multi-adjustable and adaptable storm hood.
- Two spacious front pockets with hidden zipper. Pocket on the left breast with zipper. A Napoleon and inside pocket with zipper. Inside a mobile phone and hood pocket with Velcro closure .
- Continuously adjustable cuffs.
- Fixed, elastic cord band in the waist.
- Mesh for better perspiration transport to the outside.
- Size: XS, S, M, L, XL, XXL, XXXL.

Article code	Colour code	Description
674 00	Colour: red / navy / white	
674 78	Colour: navy / white	